

CAST STEEL GATE VALVE CLASS-150#

Salient Features

- UPC Cast Steel (A 216 Gr. WCB) Gate Valve.
- Renewable Seat
- Bolted Bonnet
- Outside Screw and Yoke Type
- Raised Face Drilled/ Undrilled

Conformity to Standard & Codes:

- Product Standard-API 600 BS 1414
- Testing Standard-API-598
- Face to Face-As per ANSI B 16.10
- End Details-As per ANSI B 16.5 Class-150# Raised Face

Design Features

- Bolted Body Bonnet Joint.
- Seal Welded Seat Rings.
- Bolted Gland.
- Back seating arrangement permits the replacement of gland packing in fully open position while the Valve is under inline pressure.
- Large lift to avoid obstruction in the flow way area.
- Sturdy spoked handwheel clear from the top of yoke is provided for operation of the Valve.
- Designed for tight shut off & efficient fluid flow control.
- Ample depth of stuffing Box.

Applications

- Steam Industries
- Water Supply & Solvent Industries
- Oil Industries
- Process Industries

☒ Water ☒ Steam ☒ Oil ☐ Air



Test Certificate in Form III_C as per IBR is Furnished with every supply

UPC INSTRUMENTS PVT.LTD.

AN ISO 9001:2015, 14001-2015 CE & TÜV SÜD CERTIFIED COMPANY



CAST STEEL GATE VALVE 150#



DIMENSIONS:

NOMINAL SIZE											
Inches	Size in mm	L ±2	ØD	ØWH	ØG	PORT	K	n	ØJ	B	H App.
2"	50	178	150	200	92	51	120.7	4	19	16.3	378
2½"	65	190	180	200	104.8	63.5	140	4	19	17.9	450
3"	80	203	190	300	127	76	152.4	4	19	19.5	482
4"	100	229	230	350	157.2	102	190.5	8	19	24.3	575
5"	150	267	280	350	215.9	152	241	8	22.4	26	786
6"	200	292	345	400	269.9	203	298.5	8	22.4	29	975
8"	250	330	405	450	323.8	254	362	12	25.4	30.6	1162
10"	300	356	485	457	381	305	431.8	12	25.4	32.2	1410
12"	350	381	535	508	412.8	337	476.3	12	28.5	35.4	1545



*All dimensions are in mm unless and otherwise specified.

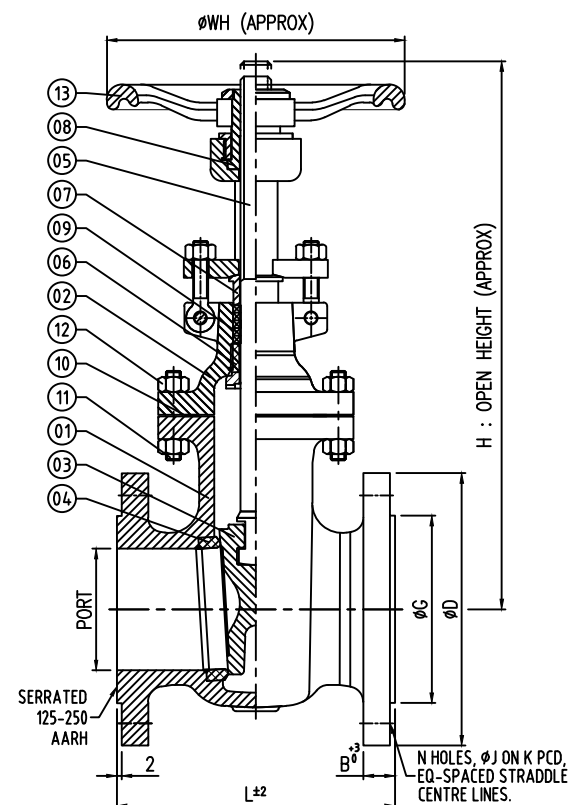
PART LIST

SR N	PART NAME	MATERIAL	STANDARD
1.	Body	C.S./CF8/CF8M	ASTM A 216 Gr. WCB/ASTM A351 Gr.CF8/CF8M
2.	Bonnet	C.S./CF8/CF8M	ASTM A 216 Gr. WCB/ASTM A351 Gr.CF8/CF8M
3.	Wedge (Flexible)	C.S./CF8/CF8M	ASTM A 216 Gr. WCB + 13%Cr.
4.	Seat Ring (Seal Weld)	C.S./CF8/CF8M	ASTM A105 + 13%Cr.
5.	Stem (No Casting)	S.S.	AISI 410/SS 304/SS 316
6.	Back seat Bush	S.S.	AISI 410/SS 304/SS 316
7.	Gland	S.S.	AISI 410/SS 304/SS 316
8.	Stem Nut	S.S.	ASTM A439 GR D2/SS304/SS316
9.	Stem packing	GRAPHITE	DIE MOULDED GRAFOIL RING
10.	Bonnet Gasket	GRAPHITE	SPIRAL WOUND SS 316 WITH GRAFOIL
11.	Bonnet Studs	C.S.	ASTM A193 GR B7/S.S.
12.	Bonnet Nuts	C.S.	ASTM A194 GR 2H/S.S.
13.	Hand Wheel	SGI	C.S.

TEST PRESSURE:

Maximum Pressure at 260°C

TYPE OF TEST	PRESSURE (KG/CM ²)
Body	30.59 Kg/cm ²
Seat	22.43 Kg/cm ²



WARRANTY

All the valves are warranted against any manufacturing defect for a period of 12 months from date of supply, provided the valves has not been misused, damaged, installed for services it is not recommended or the seal has been tempered with. The company shall be liable to furnish part/ parts thereof or full Valve as the company may deem fit.



UPC INSTRUMENTS PVT.LTD.
AN ISO 9001:2015, 14001-2015 CE & TÜV SÜD CERTIFIED COMPANY



Office: Plot No. 18, Towel Market, Gohana Road, Panipat-132103 (HARYANA)

Manufacturing Unit: Plot no.125,Near Tehsil, Dinger Majra Road, Gharaunda, Karnal-132114 (HARYANA)

✉ : info@unitechmeter.com ✉ : ho@unitechmeter.com 🌐 : www.unitechmeter.com

Due to continuous development program, design and data in this leaflet are subject to change without prior notice.